

# Home Fire Safety

## FACT SHEET



Tasmania Fire Service

## Smoke alarms for the deaf and hard of hearing

Smoke alarm packages for the deaf and hard of hearing include all the necessary components to give a person a visual and vibrating alert to a smoke alarm.

The packages usually consist of three parts:

- A flashing strobe light placed beside the bed. It is connected to a power outlet and has a built in rechargeable battery backup
- A pillow shaker (connected to the strobe light)
- A smoke alarm.

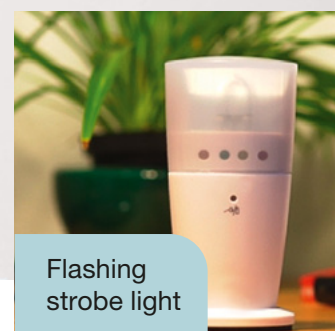


When the smoke alarm is activated it sends a radio signal, activating the flashing strobe and the pillow shaker. Note - the smoke alarm still makes loud audible beeps to alert people without a hearing impairment.

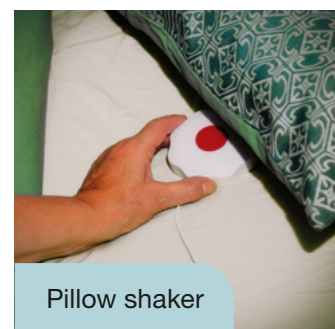
**! You may be eligible for a subsidy.**



Access to specialised smoke alarms may be made through Expression Australia. Read our fact sheet for more information or visit [expression.com.au/services/smoke-alarm-subsidy](https://expression.com.au/services/smoke-alarm-subsidy)



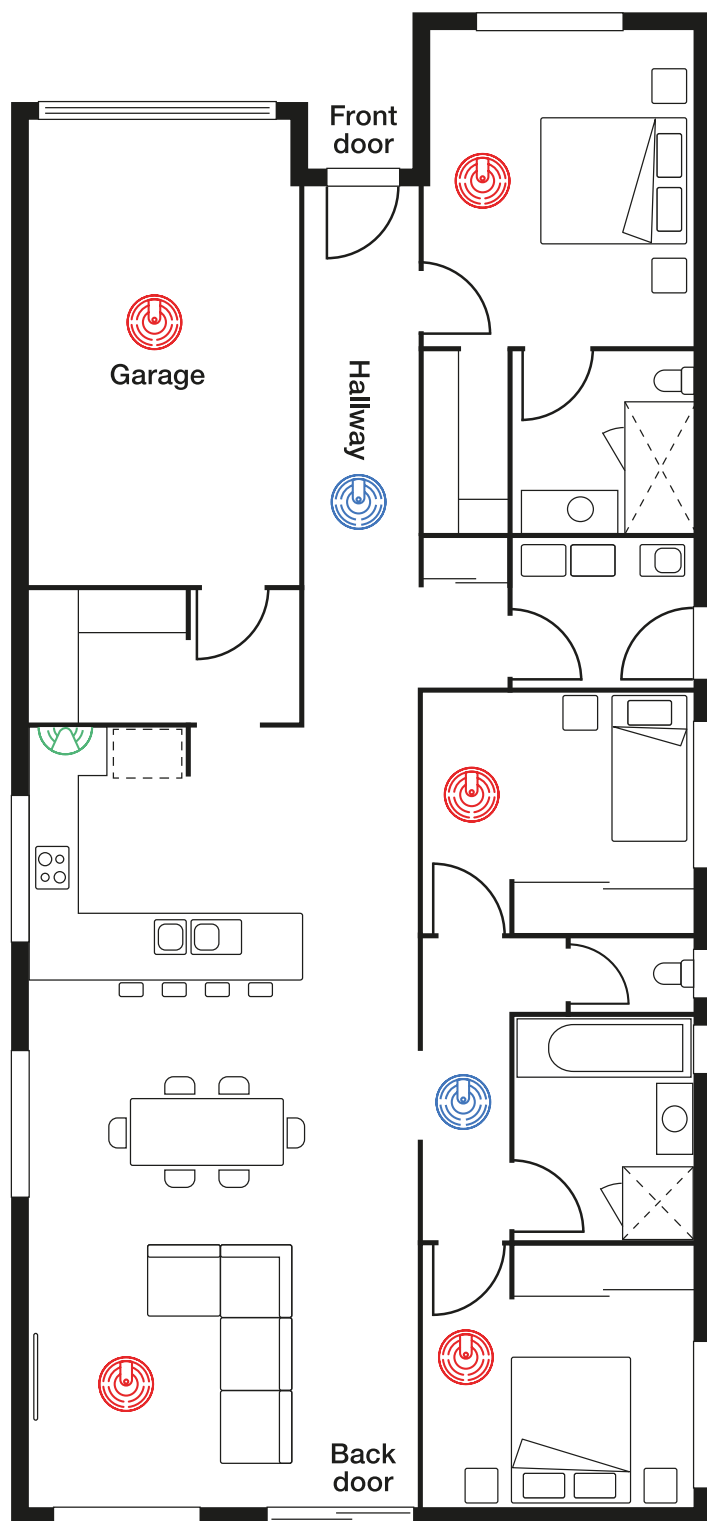
Flashing  
strobe light



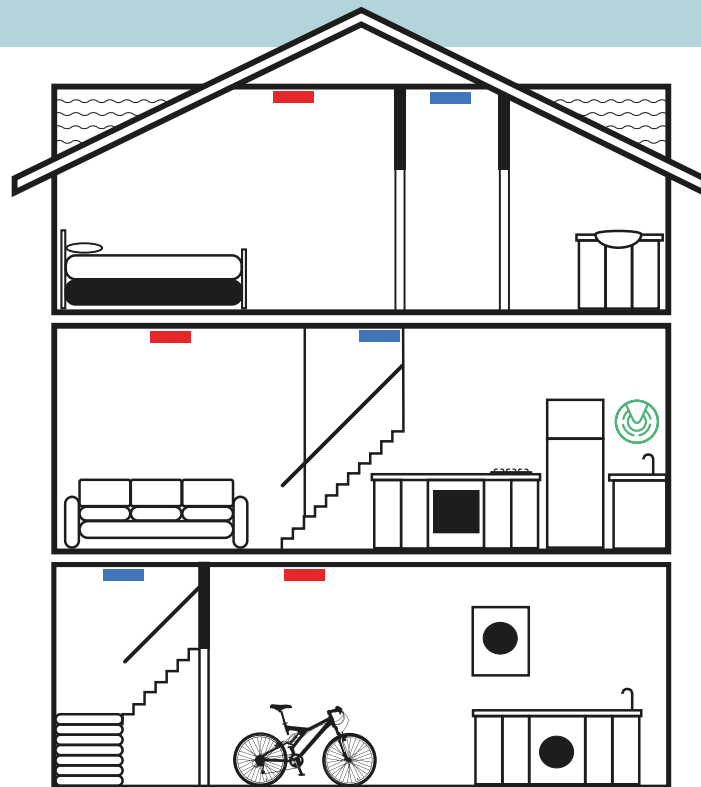
Pillow shaker



## Smoke alarm placement guide:



Single storey home



Multi-storey home



Smoke alarms required by law  
(minimum legal requirements)



Additional smoke alarms recommended  
by Tasmania Fire Service



Carbon monoxide alarms recommended  
by Tasmania Fire Service



For more information on smoke  
alarm placement, see the  
[Smoke Alarms Fact Sheet](#)

## Hot tips



For older people or people with a disability  
smoke alarms should be connected to a  
personal alarm system.



Interconnect smoke alarms so when one  
goes off they all go off alerting you and your  
family as quickly as possible if there is a fire.