

# Home Fire Safety

## FACT SHEET



Tasmania Fire Service

## Home fire escape plan

Possibly the most important plan you will ever make.



Design a home fire escape plan to suit your home and talk about it with everybody in the house. If a child has been involved in planning and practising an escape plan they are more likely to get out alive from a house fire.

- Make a **home fire escape plan** and **practise** it at least twice a year.
- Try to have at least **two ways out** of your house.
- **Use windows** as an alternative means of escape if safe to do so.
- **Close doors behind you** to prevent fire and smoke from spreading.
- Have one **Safe Meeting Place** outside your home (for example, your letterbox).

## Sample plan



Smoke alarms required by law (minimum legal requirements)



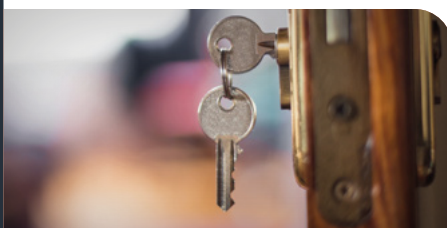
Additional smoke alarms recommended by Tasmania Fire Service



Carbon monoxide alarms recommended by Tasmania Fire Service



For more information on smoke alarm placement, see the [Smoke Alarms Fact Sheet](#)



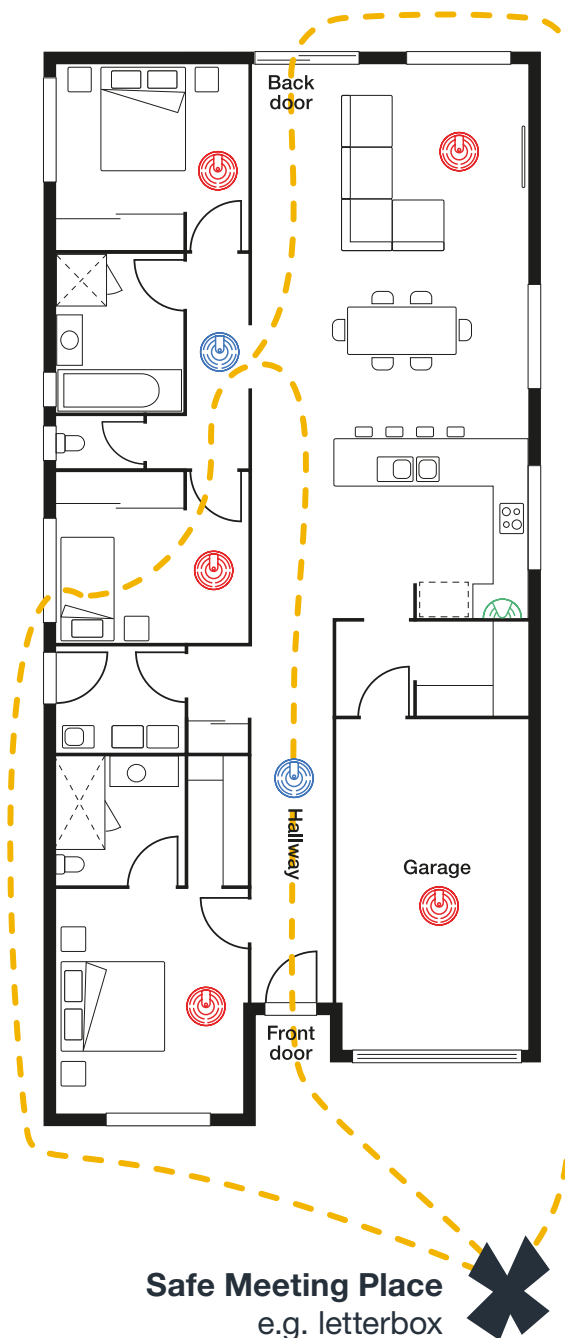
## Hot tips



**Make sure you can get out of your home quickly if there is a fire.** The best fire escape plan is worthless if you are locked in. Keep keys in deadlocks when you're at home.



**Make sure your house number is clearly visible from the street.**



**Safe Meeting Place**  
e.g. letterbox



# Home fire escape plan

Draw a plan using the grid below and mark in the exits you could use in a fire emergency. Remember to include **2 safe ways** out of your house to your **Safe Meeting Place**. When complete, place on your fridge.

Get OUT and STAY OUT!

Go to your safe meeting place

Dial 000