

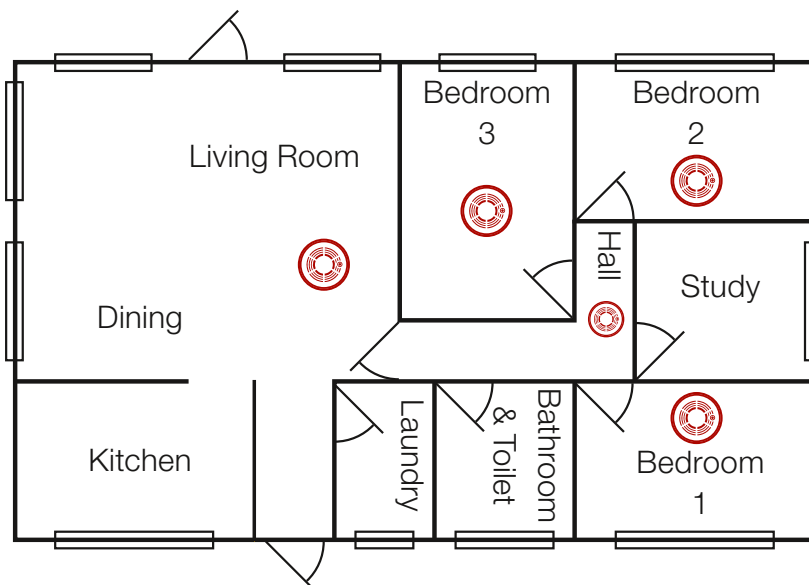
# Important information for parents



Tasmania Fire Service

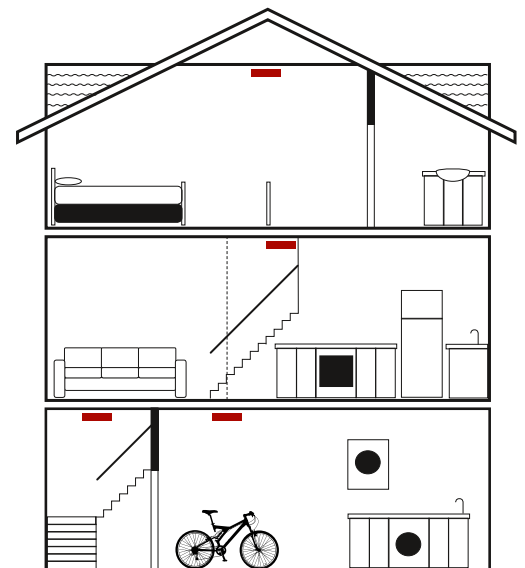
**FACT:** THE SMELL OF  
**SMOKE**  
WILL NOT  
WAKE YOU UP!

## Install a smoke alarm in every bedroom!



### Single Level Homes

Install a photoelectric smoke alarm in every sleeping area (bedroom), hallway and living area.



### Multi Level Homes

Install a photoelectric smoke alarm in every sleeping area (bedroom), hallway, living area and on the ceiling at the top of the stairway connecting the levels.

### Important

Fire Services **strongly recommend** installing a photoelectric smoke alarm in every sleeping area (bedroom), hallway, living area and at the top of stairways. All smoke alarms must be **replaced every 10 years**.