

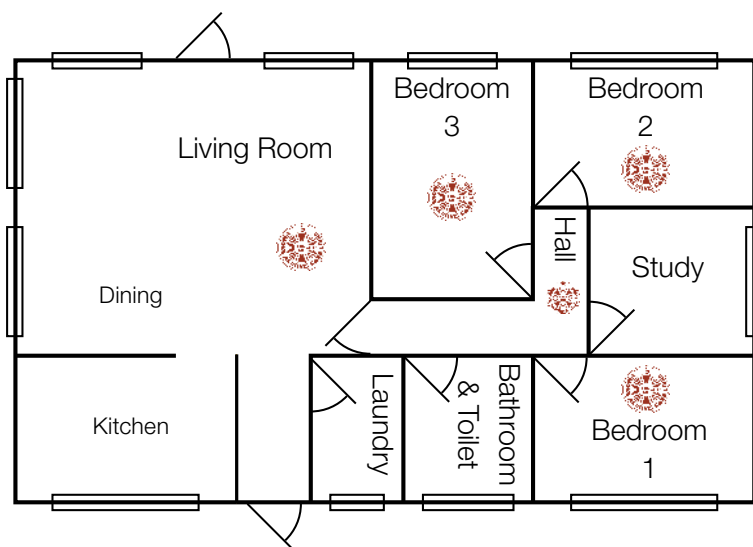
Important information for parents



Tasmania Fire Service

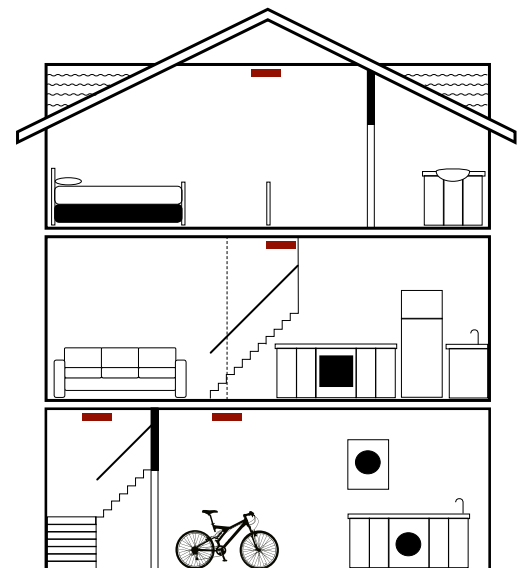
FACT: THE SMELL OF
SMOKE
WILL NOT
WAKE YOU UP!

Every bedroom needs a working smoke alarm!



Single Level Homes

Install a photoelectric smoke alarm in every sleeping area (bedroom), hallway and living area.



Multi Level Homes

Install a photoelectric smoke alarm in every sleeping area (bedroom), hallway, living area and on the ceiling at the top of the stairway connecting the levels.

Important

Fire Services **strongly recommend** installing a photoelectric smoke alarm in every sleeping area (bedroom), hallway, living area and at the top of stairways. All smoke alarms must be **replaced every 10 years**.