

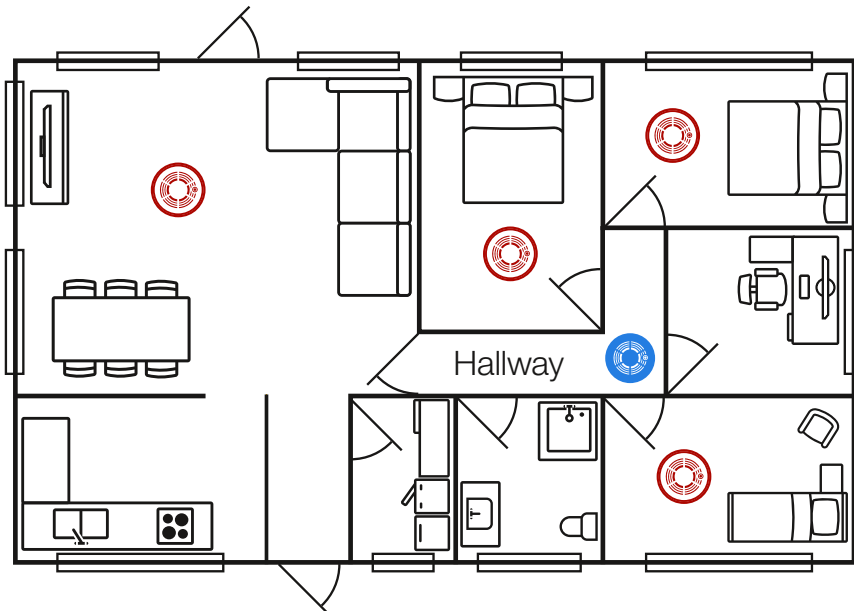
Important information for parents



Tasmania Fire Service

FACT: THE SMELL OF
SMOKE
WILL NOT
WAKE YOU UP!

Install a smoke alarm in every bedroom!



Single Level Homes

Install a smoke alarm in every sleeping area (bedroom), hallway and living area.



Required by Law:



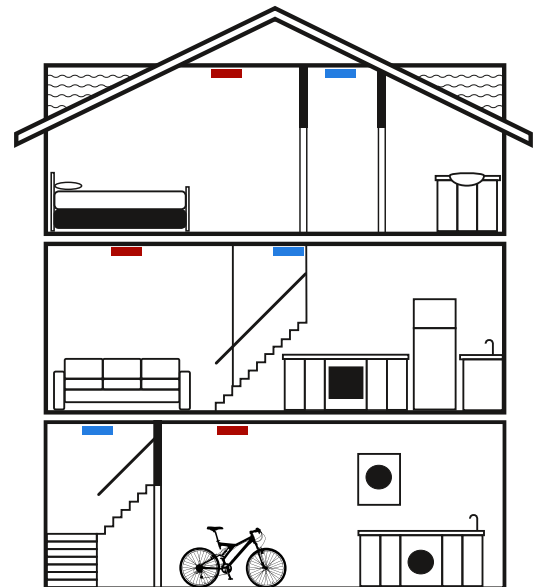
A smoke alarm in all hallways.
A smoke alarm at the top of all stairways.



Strongly Recommended:



All locations shown above.



Multi Level Homes

Install a smoke alarm in every sleeping area (bedroom), hallway, living area and on the ceiling at the top of the stairway connecting the levels.

Important

Interconnect smoke alarms so when one goes off they all go off alerting you and your family as quickly as possible if there is a fire. All alarms have a use by date of 10 years, after this time, the entire alarm must be replaced.