
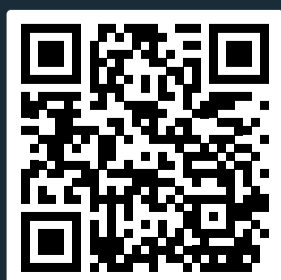
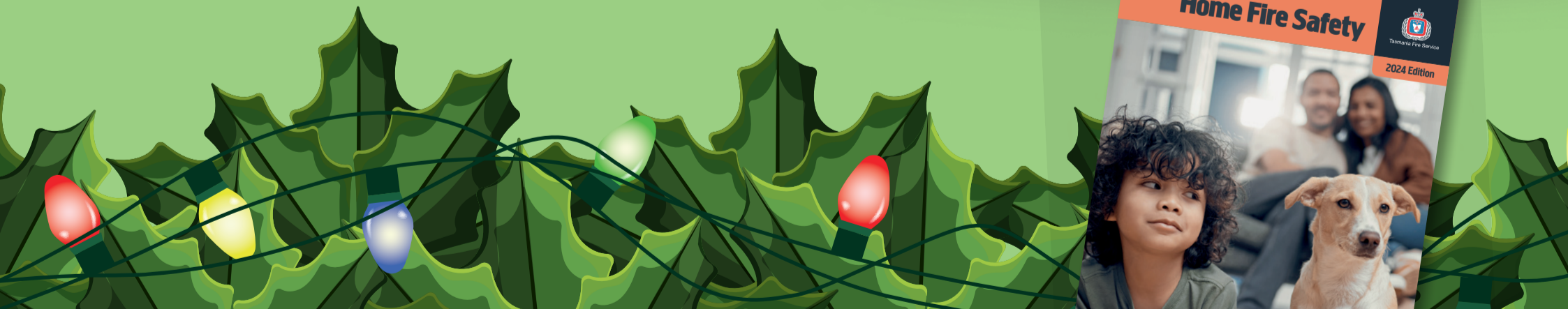


Protect what you value this festive season



Setting up lights?

- Use only one item per power socket. Don't overload power boards or piggy back double adaptors.
- Only use lights and power boards that meet Australian Standards. 
- Follow manufacturer's instructions on setting up and operating.
- Inspect plugs and leads to ensure they are in good working order. If in doubt, replace the lights.
- Keep lights away from flammable materials as they may become very hot.
- Switch off all electrical displays and decorative lights before going to bed.



For more home fire safety tips, visit

fire.tas.gov.au



Tasmania Fire Service



Tasmanian Government