

Home Fire Safety

FACT SHEET



Tasmania Fire Service

Smoke alarms for the deaf and hard of hearing

Smoke alarm packages for the deaf and hard of hearing include all the necessary components to give a person a visual and vibrating alert to a smoke alarm.

The packages usually consist of three parts:

- A flashing strobe light placed beside the bed. It is connected to a power outlet and has a built in rechargeable battery backup
- A pillow shaker (connected to the strobe light)
- A smoke alarm.



When the smoke alarm is activated it sends a radio signal, activating the flashing strobe and the pillow shaker. Note - the smoke alarm still makes loud audible beeps to alert people without a hearing impairment.

! You may be eligible for a subsidy.

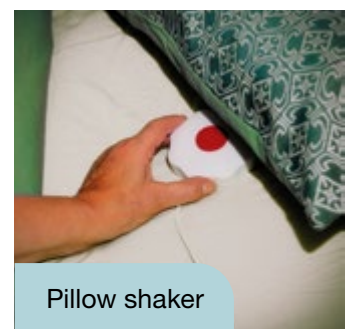
Deaf or hard of hearing people in Tasmania can use the Government-funded **Tasmanian Specialised Smoke Alarm Program** to access a heavily reduced or free specialised smoke alarm through Expression Australia.



Read our fact sheet for more information or visit expression.com.au/services/smoke-alarm-subsidy



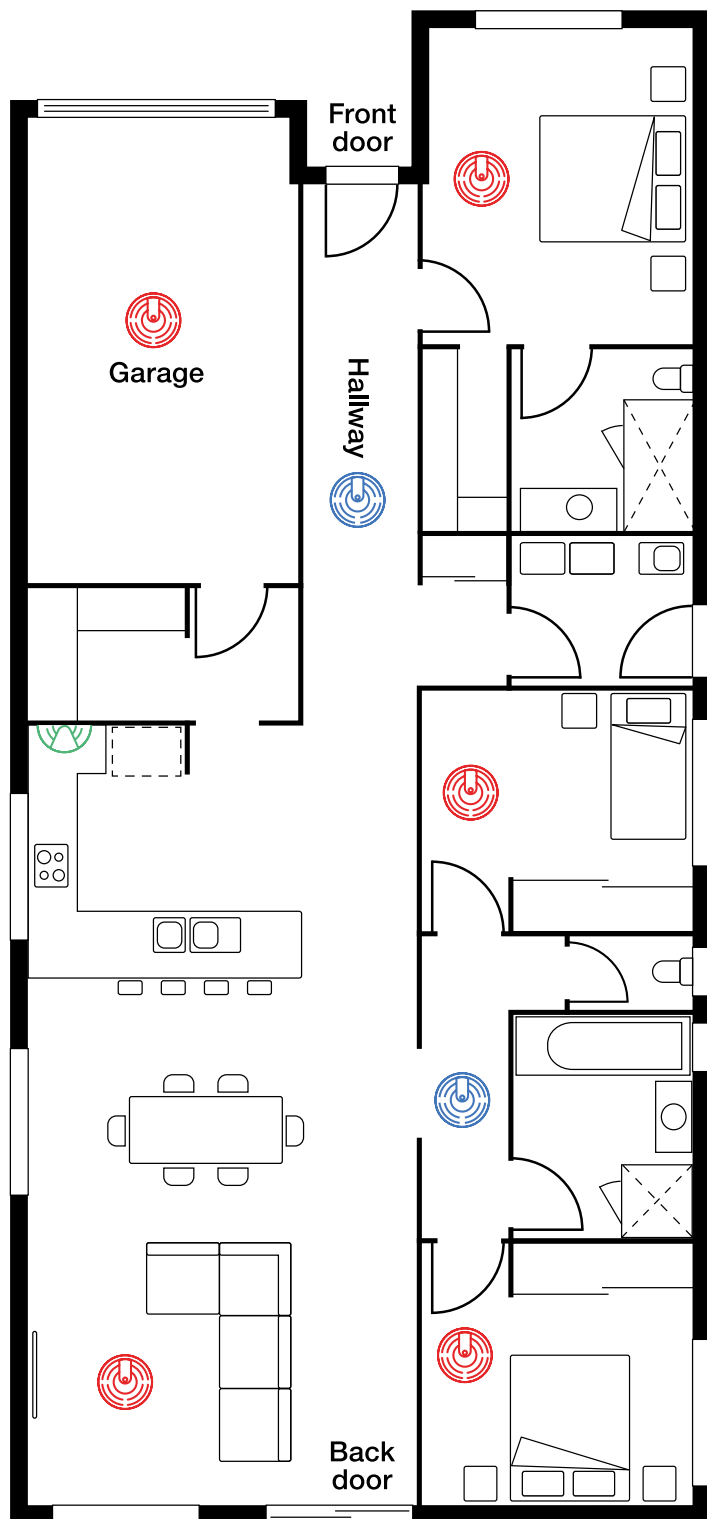
Flashing strobe light



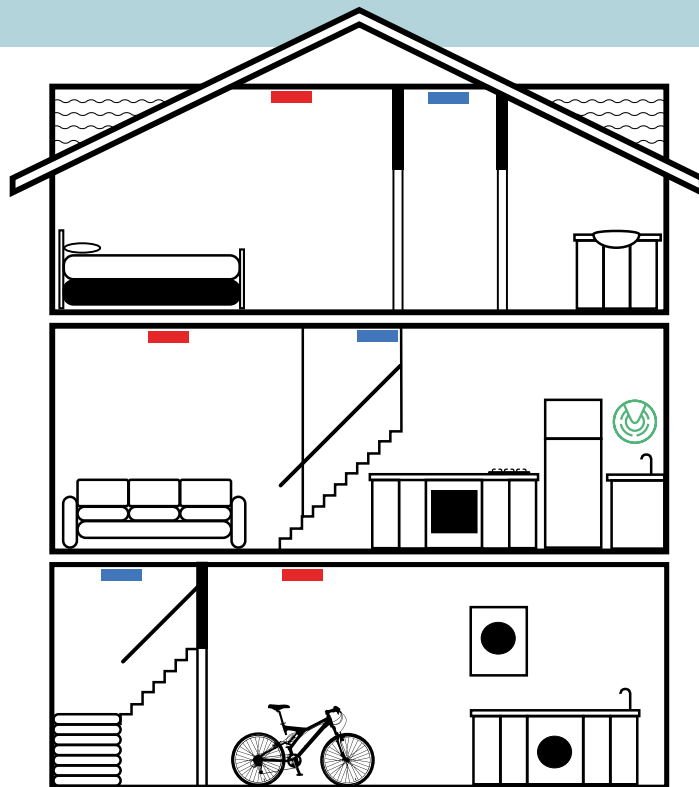
Pillow shaker






Smoke alarm placement guide:



Single storey home





Multi-storey home

-  Smoke alarms required by law (minimum legal requirements)
-  Additional smoke alarms recommended by Tasmania Fire Service
-  Carbon monoxide alarms recommended by Tasmania Fire Service



For more information on smoke alarm placement, see the [Smoke Alarms Fact Sheet](#)

Hot tips

-  For older people or people with a disability smoke alarms should be connected to a personal alarm system.
-  Interconnect smoke alarms so when one goes off they all go off alerting you and your family as quickly as possible if there is a fire.