

Home Fire Safety

FACT SHEET



Tasmania Fire Service

Home fire escape plan

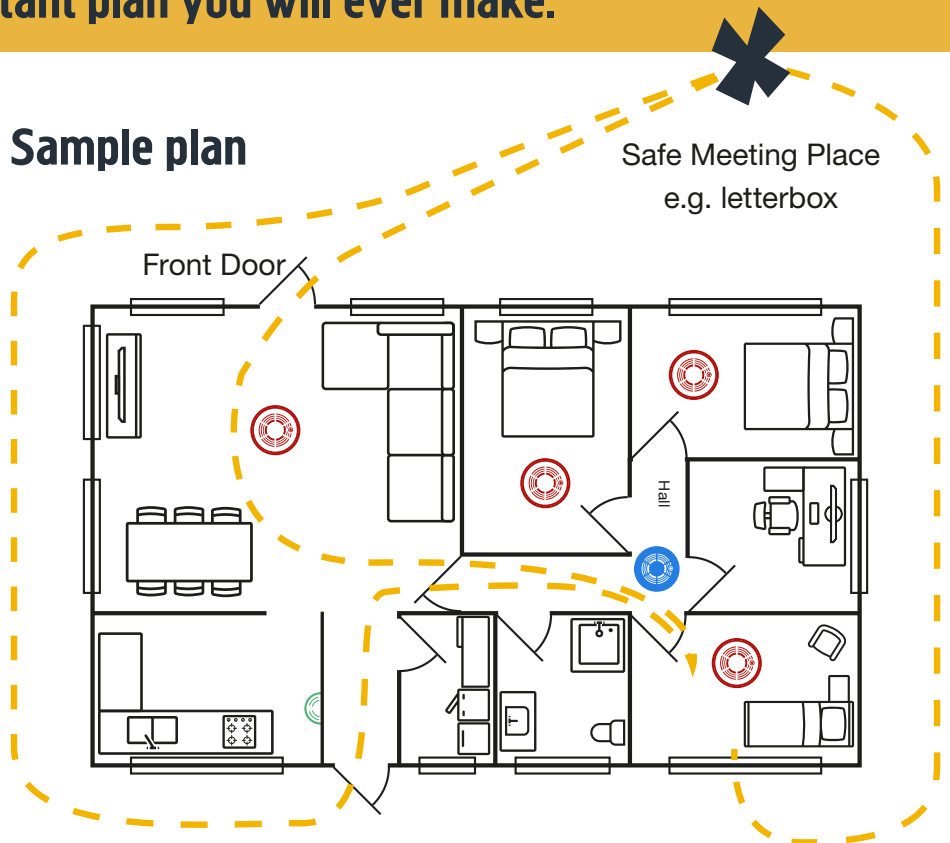
Possibly the most important plan you will ever make.



Design a home fire escape plan to suit your home and talk about it with everybody in the house. If a child has been involved in planning and practising an escape plan they are more likely to get out alive in a house fire.

- Make a **home fire escape plan** and **practise** it at least twice a year.
- **Crawl low** if caught in smoke.
- Try and have **two ways out** of a room.
- **Use windows** as an alternative means of escape if safe to do so.
- **Close doors behind you** to prevent fire and smoke from spreading.
- Have one **Safe Meeting Place** outside your home (for example, your letterbox).

Sample plan



Required by law:
A smoke alarm in all hallways. A smoke alarm at the top of all stairways.



Tasmania Fire Service recommends:
These extra locations.



Tasmania Fire Service recommends:
Carbon monoxide alarms for gas appliances and wood heaters.

Hot tips



Make sure you can get out of your home quickly if there is a fire. The best fire escape plan is worthless if your escape route is blocked. While deadlocks and security grilles may deter intruders, they can be deadly in a fire, so keep the keys in the locked door.



Make sure your house number is clearly visible from the street.

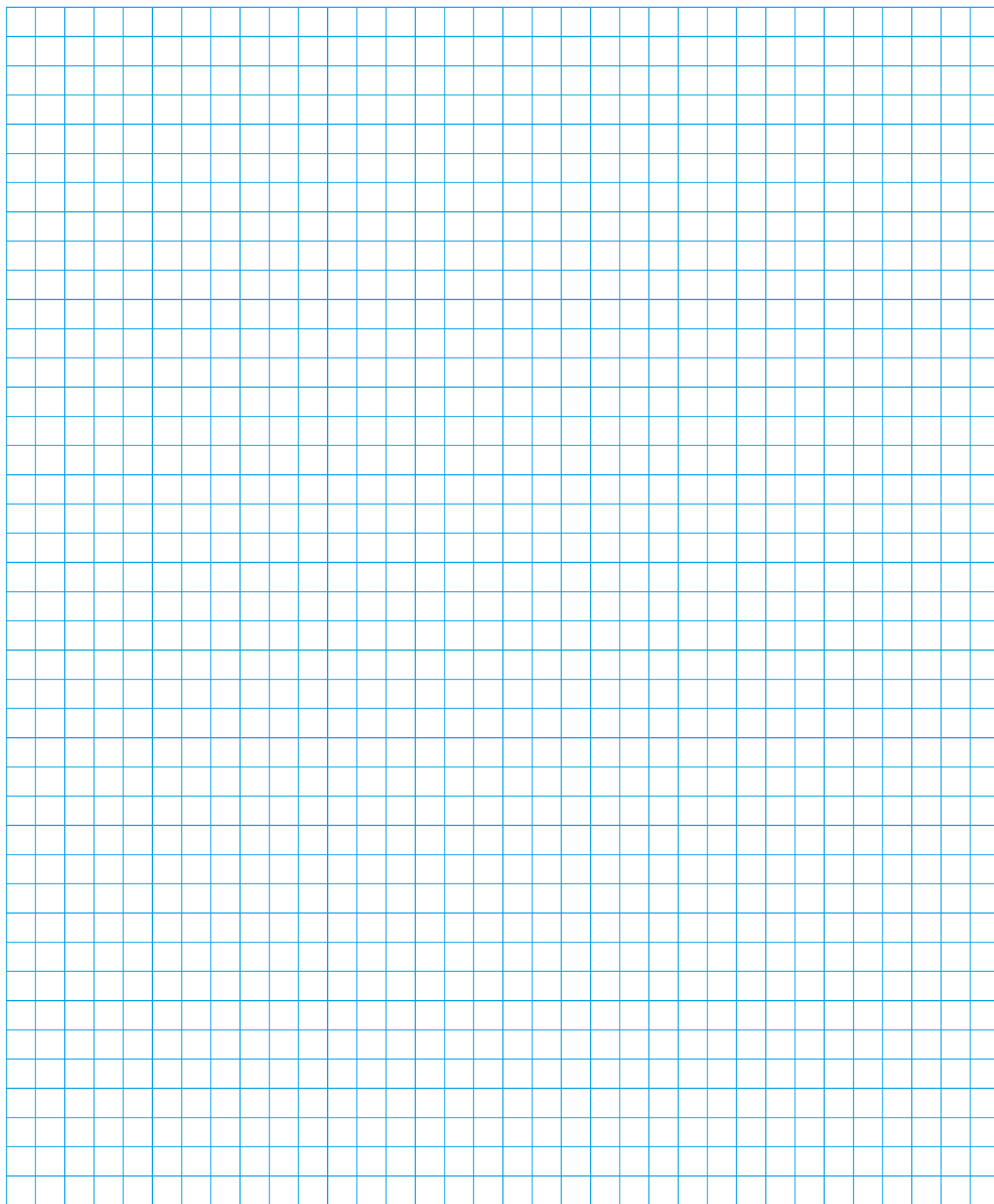




Home fire escape plan

Possibly the most important plan you will ever make.

Draw a plan using the grid below and mark in the exits you could use in a fire emergency. Remember to include **2 safe ways** out of any sleeping areas to your **Safe Meeting Place**. When complete, place on your fridge.



Get OUT and STAY OUT!

Go to your safe meeting place

Dial 000